

CASE 1

A 12 year old male presented with the asymptomatic brown to hyperpigmented verrucous linear plaques with depigmentation & dry scale crust at places on unilateral anterior chest, shoulder & arm along lines of blaschko



CASE 2

A 18 year female presented with Multiple deeply hyperpigmented verrucous plaques distributed over blaschko lines on unilateral trunk and buttock since 2 years of age

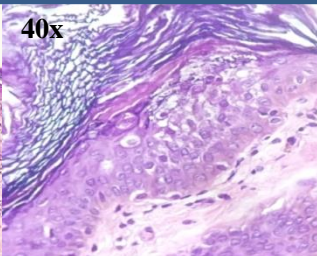
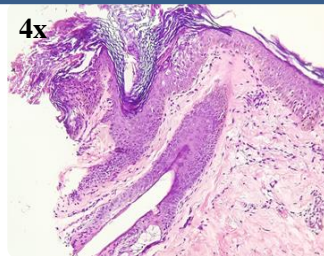


CASE 3

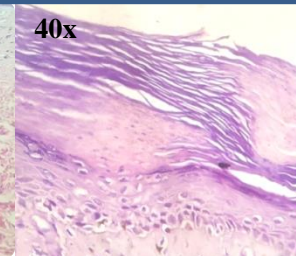
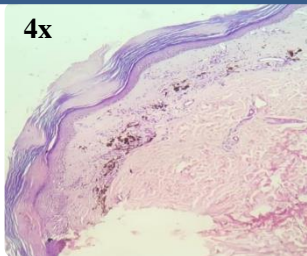
A 23 year old female presented with multiple itchy hyperpigmented macules and patches in a linear fashion on right lower limb since 6 years



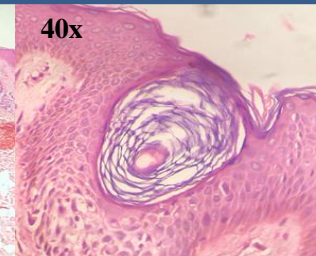
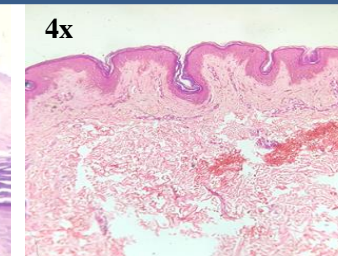
HISTOPATHOLOGY



Hypergranulosis with coarse keratohyaline granules and perinuclear vacuolization of keratinocytes with indistinct cell margin



Parakeratotic vertical columns (coronoid lamella) with hypogranulosis



Normal looking epidermis with dermal melanophages

LINEAR EPIDERMOLYTIC HYPERPERKERATOSIS

LINEAR POROKERATOSIS

ADULT ONSET BLASCHKITIS

CONCLUSION- Epidermolytic hyperkeratosis is an autosomal dominant trait with a prevalence of approximately 1 in 200,000 to 300,000 persons. Linear EHK is rare and does not manifest blistering. Linear lesions with similar morphology are diagnosed and distinguished by histopathologic features.